



Direction de la formation
Campus des métiers de Quimper
Chambre de Métiers et de l'Artisanat du Finistère

International programme for foreign students












<http://campusdesmetiers29.bzh/erasmus-international.html>

http://campusdesmetiers29.bzh/images/documents/International_training_school_program_french_gastronomy_cooking_baking_campus_metiers_quimper_finistere_English.pdf

http://campusdesmetiers29.bzh/images/documents/Trombinoscope_Etudiants_programme_international_formation_gastronomie_fran%C3%A7aise_cuisine_patisserie_campus_metiers_quimper_finistere.pdf

Programme international / International programme for foreign students
2019-2020

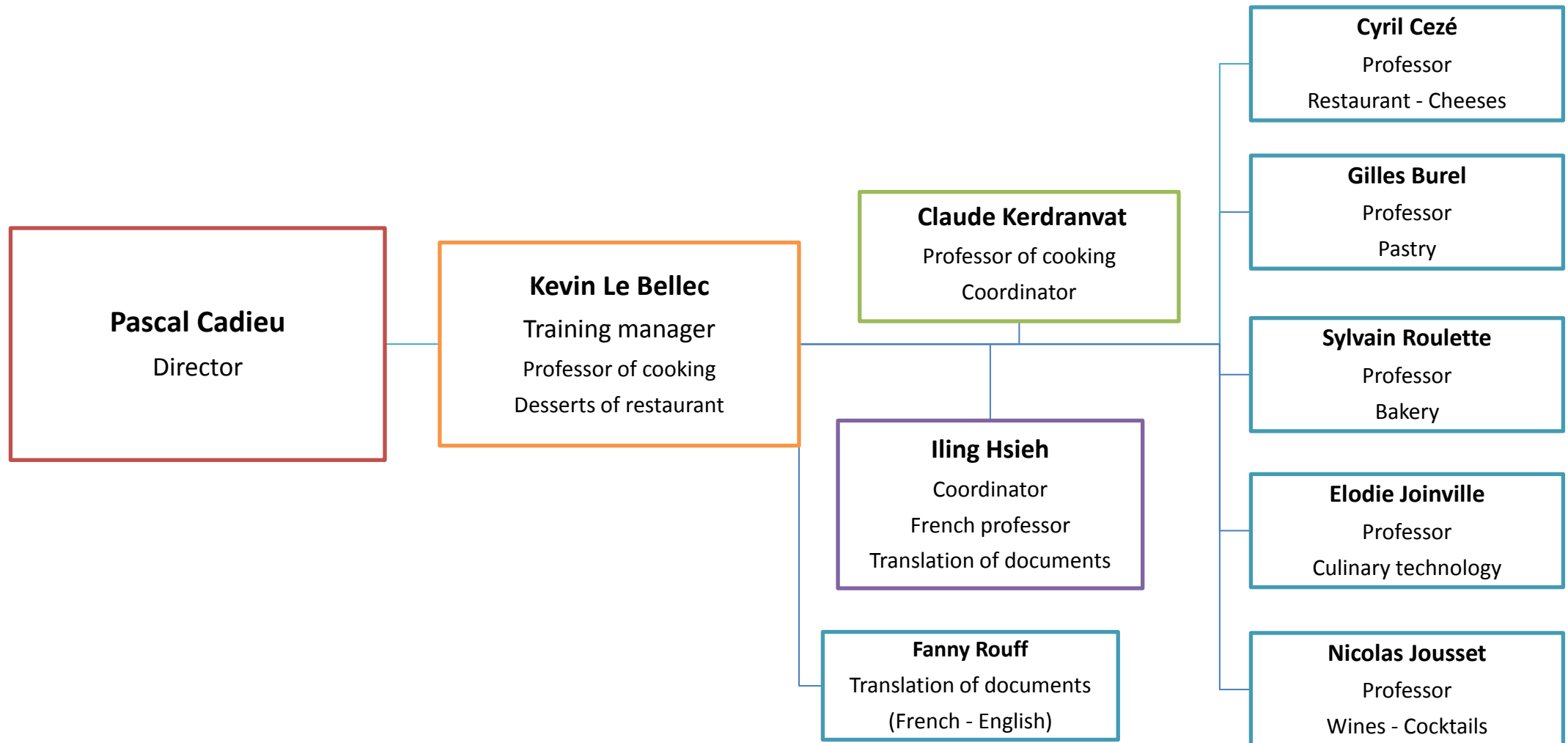
<p>Pascal CADIEU</p>  <p>Directeur / Director pascal.cadieu@cma29.fr 06.77.35.97.29</p>	<p>Kevin LE BELLEC</p>  <p>Responsable de la formation / Training manager Professeur de cuisine / Professor of cooking kevin.lebellec@cma29.fr 07.60.84.93.18</p>
<p>Claude KERDRANVAT</p>  <p>Professeur de cuisine / Professor of cooking Coordinateur / Coordinator claudio.kerdranvat@cma29.fr 02.98.76.46.35</p>	<p>Iling HSIEH</p>  <p>Coordinatrice / Coordinator Professeure de Français / French professor iling.Hsieh@cma29.fr 06.63.51.35.15</p>
<p>Cyril CEZE</p>  <p>Professeur / Professor Service en salle - Fromages / Restaurant – Cheeses cyril.ceze@cma29.fr 02.98.76.46.35</p>	<p>Nicolas JOUSSET</p>  <p>Professeur / Professor Vins – Cocktails / Wines - Cocktails nicolas.jousset@cma29.fr 06.88.53.55.11</p>
<p>Elodie JOINVILLE</p>  <p>Professeure / Professor Technologie culinaire / Culinary technology elodie.joinville@cma29.fr 02.98.76.46.35</p>	<p>Gilles BUREL</p>  <p>Professeur / Professor Pâtisserie / Pastry gilles.burel@cma29.fr 02.98.76.46.35</p>
<p>Fanny ROUFF</p>  <p>Traduction de documents / Translation of documents Français-Anglais / French-English fanny.rouff@cma29.fr 02.98.76.46.35</p>	<p>Sylvain ROULETTE</p>  <p>Professeur / Professor Boulangerie / Bakery sylvain.roulette@cma29.fr 06.42.48.95.59</p>



International programme for foreign students

Organizational chart Taiwan

2019/2020





Programme International pour les étudiants étrangers

Organigramme Formation Taïwan

2019/2020

